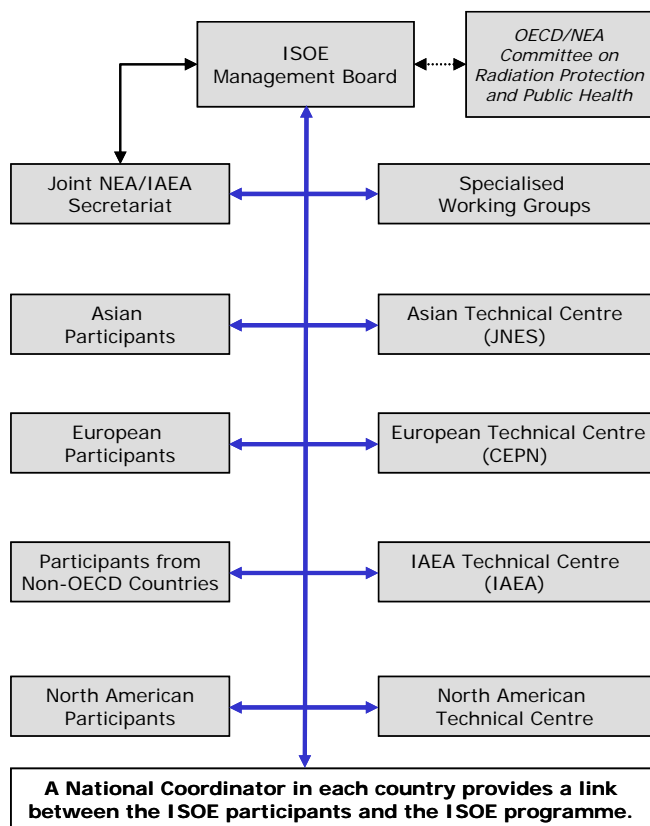


ISOE Structure

ISOE operates in a decentralised manner. A Management Board of representatives from all participating countries, supported by the joint NEA and IAEA Secretariat, provides overall direction.

Four ISOE Technical Centres (Europe, North America, Asia and IAEA) manage the programme's day-to-day technical operations, serving as contact point for the transfer of information from and to participants.



ISOE Contacts

To find out more about the ISOE programme

www.isoe-network.net

ISOE Joint Secretariat

OECD Nuclear Energy Agency (NEA)

ISOE Joint Secretariat
12, boulevard des Isles
92130 Issy-les-Moulineaux, France
tel: +33 1 45 24 10 45 eml: NEA.PR-ISOE@oecd.fr

International Atomic Energy Agency (IAEA)

ISOE Joint Secretariat
Division of Radiation, Transport and Waste Safety
P.O. Box 100, 1400 Vienna, Austria
tel: +43 1 2600 26173 eml: J.Ma@iaea.org

Technical Centres

Asian Technical Centre (ATC)

Japan Nuclear Energy Safety Organisation
TOKYU REIT Toranomon Bldg. 8th Fl.
3-17-1 Toranomon, Minato-ku
Tokyo 105-0001, Japan
tel: +81 3 4511 1953 eml: hayashida-yoshihisa@jnes.go.jp

European Technical Centre (ETC)

Centre d'étude sur l'évaluation de la protection dans le domaine nucléaire (CEPN)
28, rue de la Redoute
92260 Fontenay-aux-Roses, France
tel: + 33 1 55 52 19 39 eml: schieber@cepn.asso.fr

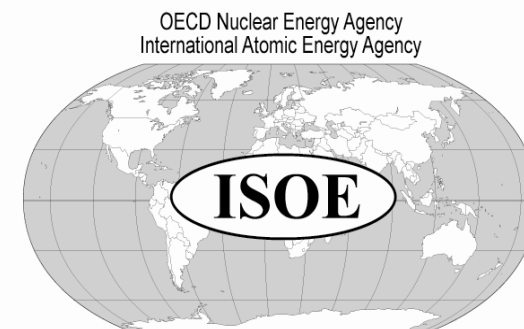
IAEA Technical Centre (IAEA TC)

International Atomic Energy Agency
Division of Radiation, Transport and Waste Safety
P.O. Box 100, 1400 Vienna, Austria
tel: +43 1 2600 26173 eml: J.Ma@iaea.org

North American Technical Centre (NATC)

Radiation Protection Department
Cook Nuclear Plant
One Cook Place, Bridgman, Michigan 49106, USA
tel: +1 269 465 5901 x2305 eml: dwmiller2@aep.com

Information System on Occupational Exposure



INFORMATION SYSTEM ON OCCUPATIONAL EXPOSURE

www.isoe-network.net

ISOE Objective

To provide a forum for radiation protection professionals from nuclear electricity utilities and national regulatory authorities worldwide to share dose reduction information, operational experience and information to improve the optimisation of radiological protection at nuclear power plants.



ISOE Background

ISOE was created in 1992 to improve the management of occupational exposures at nuclear power plants through the collection and analysis of occupational exposure data and trends, and through the exchange of lessons learned among utility and national regulatory authority experts.

Since then, the system has grown continuously and now provides participants with a comprehensive resource for optimising occupational exposure management at nuclear power plants worldwide.

ISOE Products and Benefits

ISOE is the **world's most comprehensive source** of experience and information for occupational exposure management at nuclear power plants, and offers its members a variety of resources for occupational exposure management, including:

- A **global network of radiation protection professionals** from nuclear electricity utilities and national regulatory authorities
- The **world's largest database on occupational exposure** from nuclear power plants
- Detailed studies and analyses on **current issues** in operational radiation protection
- Annual **analysis of dose trends** and an overview of current ISOE developments
- A **forum for discussing occupational exposure management issues** through ISOE international and regional Symposia
- Support through **responses to special requests** and the organisation of voluntary benchmarking visits for the sharing of good practice in occupational radiation protection
- The **ISOE Network** (www.isoee-network.net): a "one-stop" information exchange website for ISOE members, providing access to ISOE products, resources, and on-line user forums.



ISOE Membership

Membership in ISOE includes representatives from nuclear electricity utilities and national regulatory authorities.

The ISOE programme includes the participation of 66 utilities in 26 countries, as well as the participation of regulatory authorities of 24 countries (as of 2010).

The ISOE database itself includes occupational exposure information for 395 operating units and 76 units in cold-shutdown or some stage of decommissioning in 29 countries, covering about 90% of the world's operating commercial power reactors.

ISOE is jointly sponsored by the:

- OECD Nuclear Energy Agency (NEA), and
- International Atomic Energy Agency (IAEA).

Countries participating in ISOE



ISOE facilitates the sharing of experience and the building of linkages between ISOE regions to develop a global approach to ALARA exposure management.