



General Distribution
November 2011

ISOE INFORMATION SHEET

JAPANESE DOSIMETRIC RESULTS: Fiscal Year 2010 DATA AND TRENDS

ISOE Asian Technical Center - Information Sheet No. 35 (2011)

This ISOE information sheet presents the Japanese occupational exposure results in Fiscal Year (FY) 2010 and trends from FY 1991 to FY 2010 for commercial reactors in operation which include PWRs, BWRs and a GCR. *

Tables 1 and 2 give the total collective doses and the average collective doses per reactor for PWRs, BWRs and LWRs, respectively, ended in FY 2009 and FY 2010. The decrease in the collective dose for PWRs was mainly due to the decrease of the improvement works. Main events influencing collective dose for BWRs were replacement works of PLR piping. Main events influencing collective dose for PWRs were preventive maintenance works for pressurizer nozzle.

The collective dose for the FY 2010 doesn't include the doses for Fukushima-Daiichi and Daini NPPs (BWRs), because TEPCO hasn't finished evaluating the collective dose for the FY2010. Because the "2010 off the Pacific coast of Tohoku Pacific Earthquake" of Magnitude:9.0 occurred on March 11,2011, and the huge tsunami damaged Fukushima-Daiichi and Daini NPPs. Exposure data of them are under estimation by the utility.

Figures 1 to 6 show the trends from FY 1991 of the total collective dose, the average collective dose per generated electricity by reactor and the average individual dose etc. in Japan.

These figures don't include the collective doses for Fukushima-Daiichi and Daini NPPs for the FY 2010 either.

Table 1. Total collective dose in FY 2009 and FY 2010

| Reactor Type | Total Collective Dose (man.Sv) | |
|--------------|--------------------------------|---------|
| | FY 2009 | FY 2010 |
| PWRs | 38.56 | 36.24 |
| BWRs | 43.50 | 24.83 |
| Total | 82.06 | 61.07 |

Table 2. Average collective dose per reactor in FY 2009 and FY 2010

| Reactor Type | Average Collective Dose (man.Sv) | |
|--------------|----------------------------------|---------|
| | FY 2009 | FY 2010 |
| PWRs | 1.61 | 1.51 |
| BWRs | 1.36 | 0.78 |
| Total | 1.47 | 1.09 |

* GCR; The Tokai NPS, the sole GCR in Japan ceased commercial operation in March 31, 1998.

Figure 1

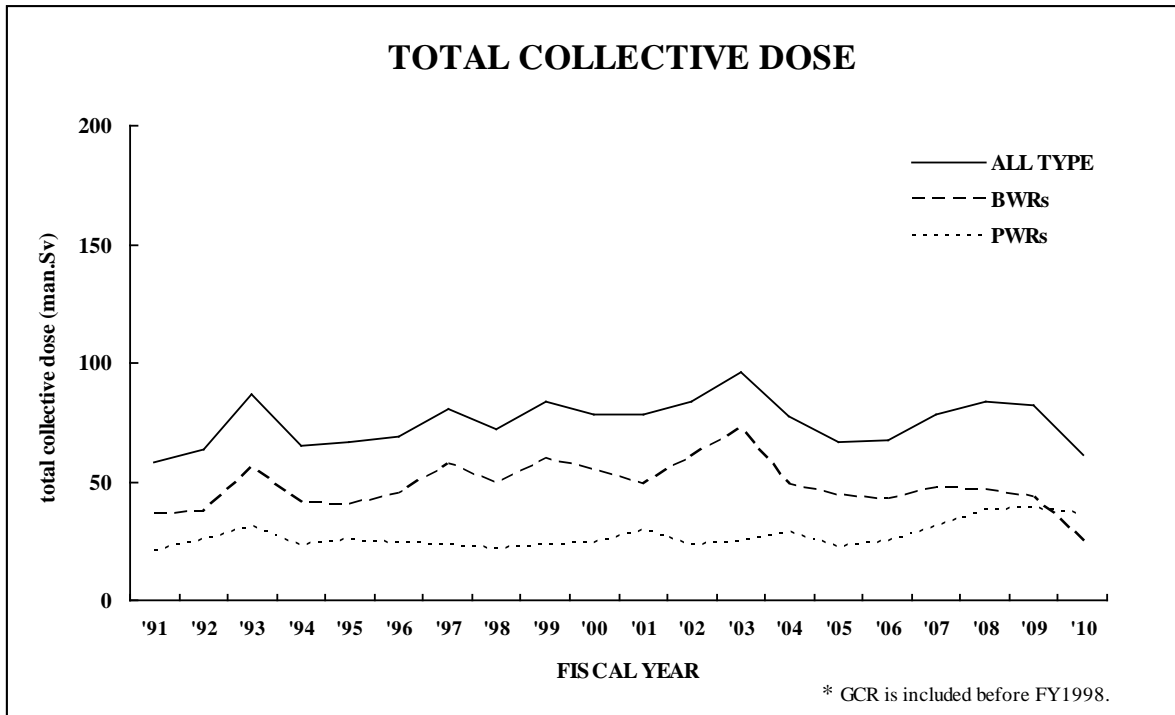


Figure 2

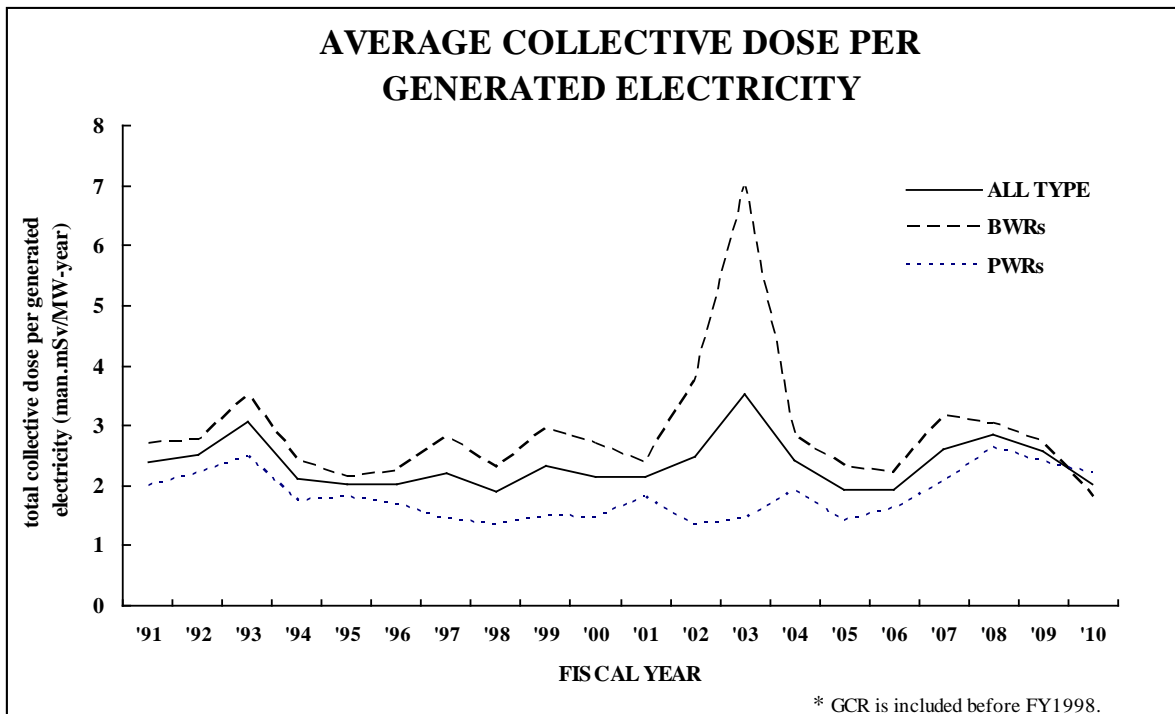
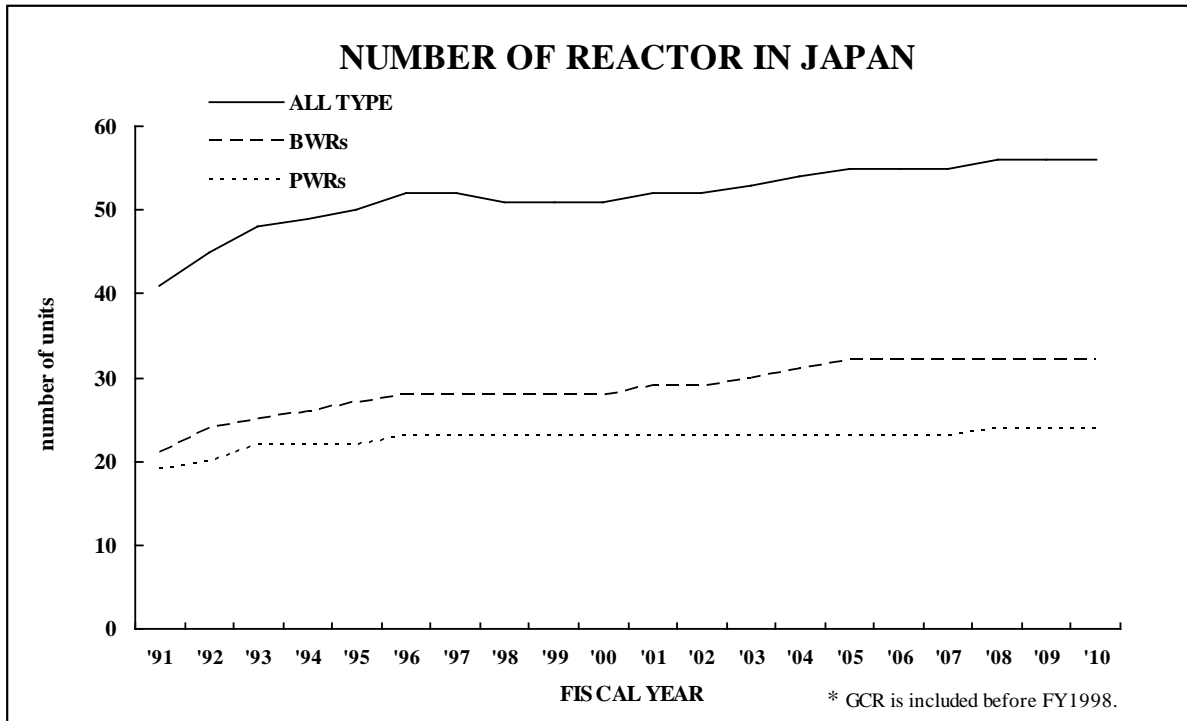


Figure 3



** The number of PWRs for FY 2008 includes Tomari unit 3 in test operation.

*** The Fukushima Daiichi and Daini NPPs are included in FY2010

Figure 4

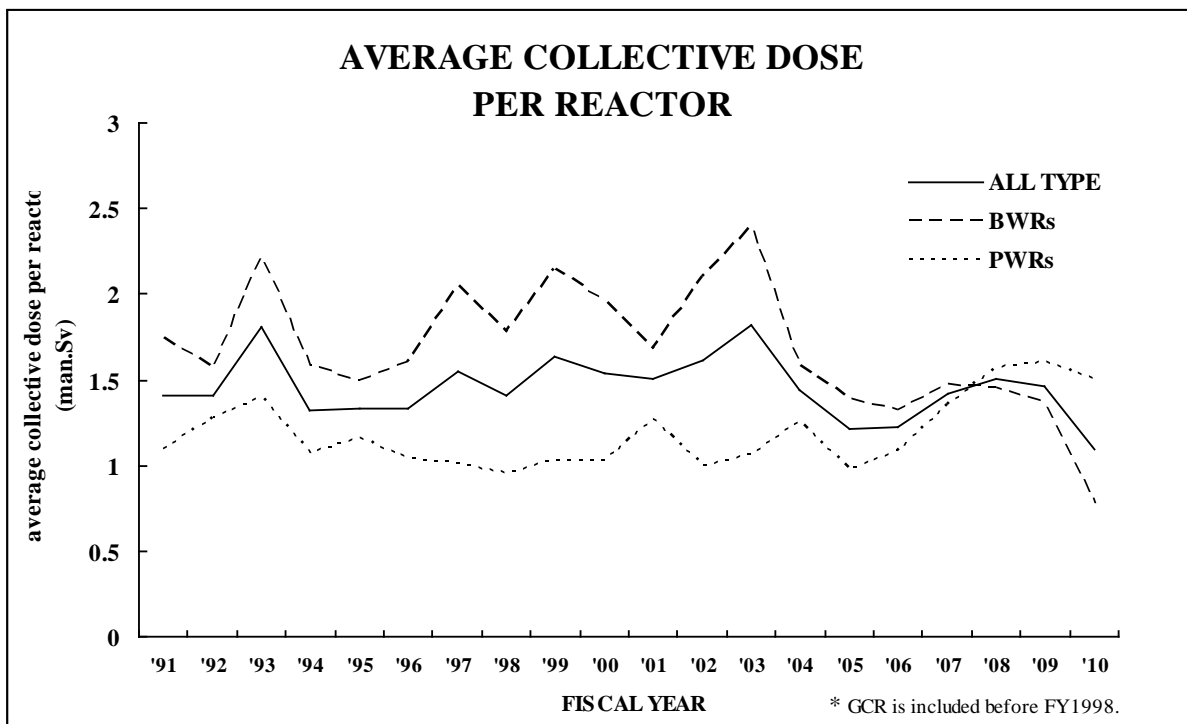


Figure 5

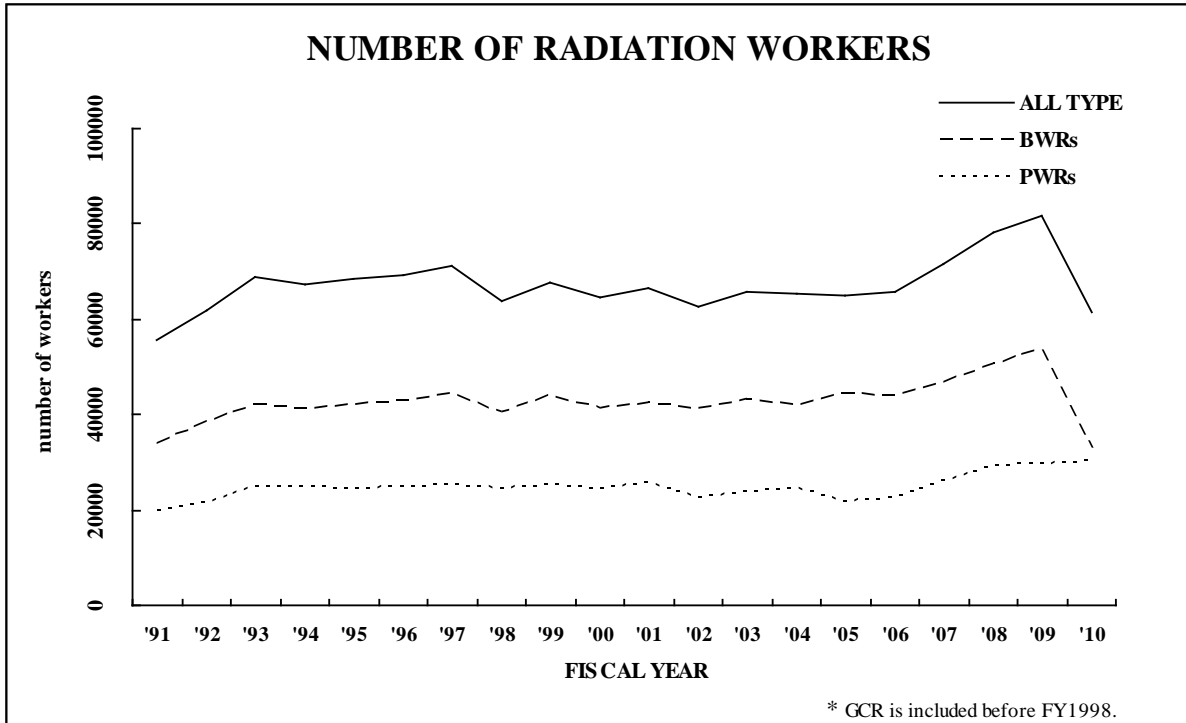


Figure 6

